

# DAILY RESEARCH, 14 FEBRUARI 2020

**PT PROFINDO SEKURITAS INDONESIA**

**GD PERMATA KUNINGAN LT 19  
JL KUNINGAN MULIA KAV 9C GUNTUR SETIABUDI JAKARTA SELATAN 12980**

**TELP +62 21 8378 0888**

**EMAIL : CUSTOMERSERVICE@PROFINDO.COM**

**WWW.PROFINDO.COM | PROCLICK.PROFINDO.COM**

# MARKET MOVERS



Bursa Amerika ditutup melemah setelah semakin meluasnya penyebaran virus Corona. Dow -0.43 %, S&P 500 -0.16%, Nasdaq -0.14%

Bursa saham Eropa ditutup melemah setelah kekhawatiran investor terhadap semakin merabahnya virus Corona. Selain itu investor juga menanti rilis data laporan keuangan perusahaan 2019. Indeks FTSE -1.09%, DAX -0.03%, CAC -0.19%

Bursa Saham Asia dibuka mayoritas memerah akibat sentiment negative bahwa penyebaran virus corona semakin meluas di China. Indeks Hang Seng +0.34%, Shanghai -0.01%, Nikkei -0.72%, KOSPI +0.39%, STI +0.08%

Harga Emas ditutup menguat dikarenakan kekhawatiran perlambatan ekonomi akibat virus Corona. Harga Minyak WTI ditutup menguat ditengah ekspektasi para produsen akan mengurangi produksi lebih besar lagi guna menyambiangi penurunan permintaan minyak mentah akibat virus covid-19 di china. Gold +0.04%, WTI -0.16%, Brent -0.44%

IHSG pada perdagangan hari ini diperkirakan akan mengalami melemah dengan Range pergerakan 5775-5927 dengan saham-saham yang dapat diperhatikan : **ADRO KINO ACES SSMS IMAS BBNI**

# MARET DATA

## AMERIKA

DOW 30	29,423.31	-128.11	-0.43%
S&P 500	3,373.94	-5.51	-0.16%
NASDAQ	9,711.97	-13.99	-0.14%

## EUROPE

DAX	13,745.43	-4.35	-0.03%
FTSE 100	7,452.03	-82.34	-1.09%
CAC 40	6,093.14	-11.58	-0.19%

## ASIA

SHANGHAI	2,911.06	+4.99	+0.17%
HANGSENG	27,846.50	+116.50	+0.42%
SET	1,532.77	-7.07	-0.46%
KOSPI	2,244.27	+11.31	+0.51%
JCI	5871.954	-41.127	-0.696%
NIKKEI	23,677.00	-150.73	-0.63%
STI	3,221.61	+1.52	+0.05%

## COMMODITIES

GOLD	1,579.65	+0.85	+0.05%
WTI OIL	51.42	0.00	0%
BRENT OIL	56.30	-0.15	-0.27%
COAL	70.25	+0..35	+0.50%
PALM OIL	26550	-64	-2.35%
TINS	16,602.50	+30.00	+0.18%
NICKEL	13,230.00	-27.50	-0.21%

# EVENT & ECONOMIC CALENDER

## ECONOMIC CALENDER :

### GLOBAL

11/2/20	UK GDP
	UK MANUFACTURING PRODUCTION
	ECB PRESIDENT LAGARDE SPEAKS
	US JOB OPENING (DES)
12/2/20	US CRUDE OIL INVENTORIES
13/2/20	US CORE CPI (MoM)
14/2/20	GERMAN GDP
	US CORE RETAIL SALES (MoM) JAN

## CORPORATE ACTION :

### DEVIDEN

17/2/20 XISB (ETF) @92.8 (CUM 17/2)

### RUPS

10/2/20 TINS GGRP

11/2/20 DIVA

12/2/20 CSAP

14/02/20 SRAJ

### IPO

10/2/20 TAMA @175

12/2/20 IKAN @120, AYLS @100

14/2/20 DADA @102

### RIGTH ISSUE

### WARRANT

10/2/20 TAMA (1 : 1 @288)

12/2/20 AYLS (1 : 1 @ 150)

# JAKARTA COMPOSITE INDEX



## PREVIOUS 13 FEBRUARI 2020

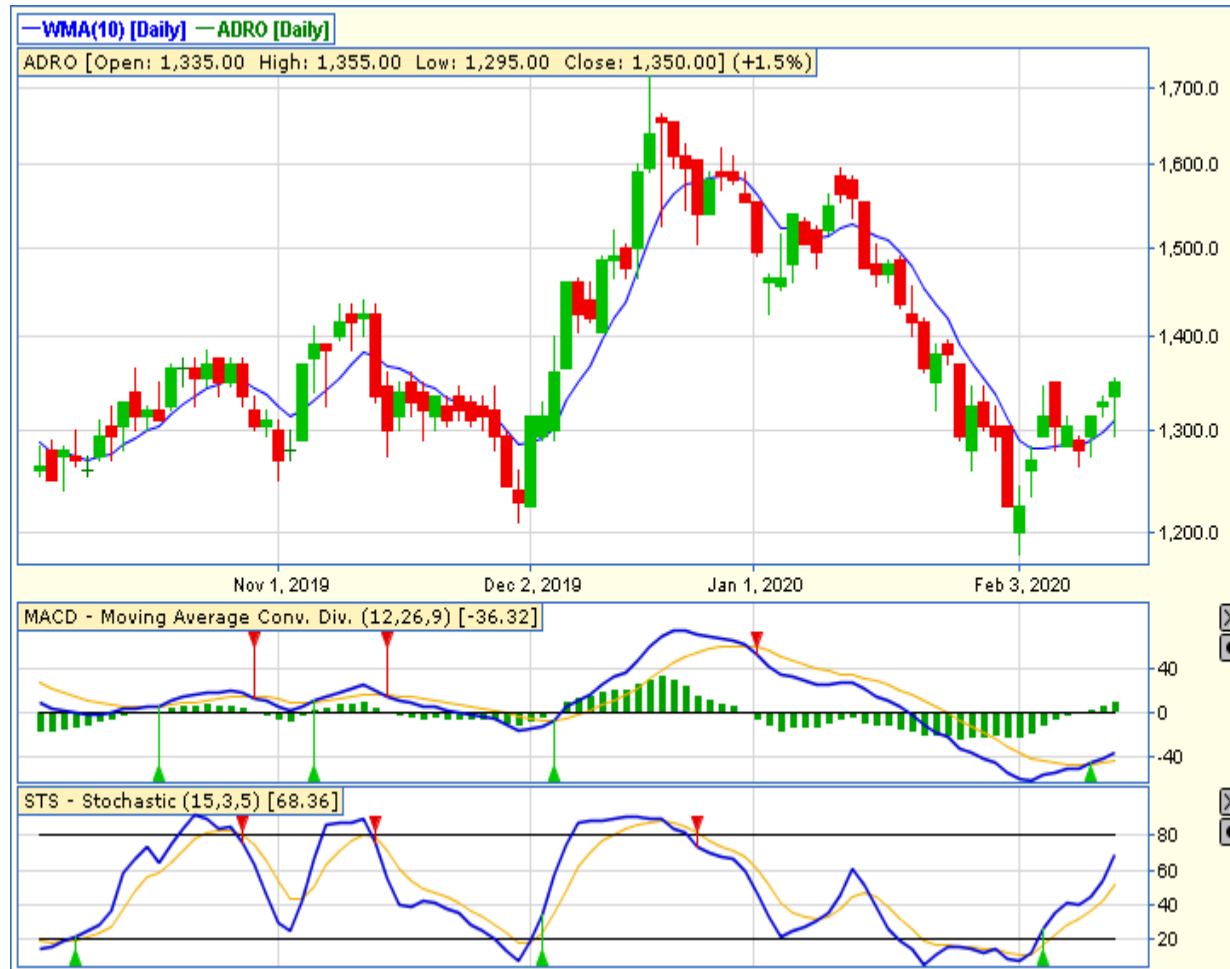
CLOSING	5871.954	-0.696%
TRANSACTION	IDR 6.77 TRILLION	
FOREIGN NETT	IDR 48.5 BIO (BUY)	

## PREDICTION 14 FEBRUARI 2020

**BEARISH**  
**RANGE 5776-5927**

DOWNTREND  
STOCHASTIC : DOWNTREND  
MACD : HISTOGRAM NEGATIF DAN DOWNTREND

# TECHNICAL RECOMENDATION



## ADRO – PT ADARO ENERGY TBK

CLOSING 13/2/2020 RP 1350 (+1.5%)

**BUY**

**TARGET PRICE 1420**

**STOPLOSS < 1320**

BREAK OUT TRIANGLE

STOCHASTIC : UPTREND

MACD : HISTOGRAM POSITIF DAN UPTREND

# TECHNICAL RECOMENDATION



## KINO – PT KINO INDONESIA TBK

CLOSING 13/2/2020 RP3030 (+1%)

**BUY**

**TARGET PRICE 3160**

**STOPLOSS < 3000**

THREE WHITE SOLDIERS

STOCHASTIC : UPTREND

MACD : HISTOGRAM POSITIF DAN UPTREND

# TECHNICAL RECOMENDATION



## ACES – PT ACE HARDWARE INDONESIA TBK

CLOSING 13/2/2020 RP 1610 (+1.6%)

**BUY**

**TARGET PRICE 1680**

**STOPLOSS < 1585**

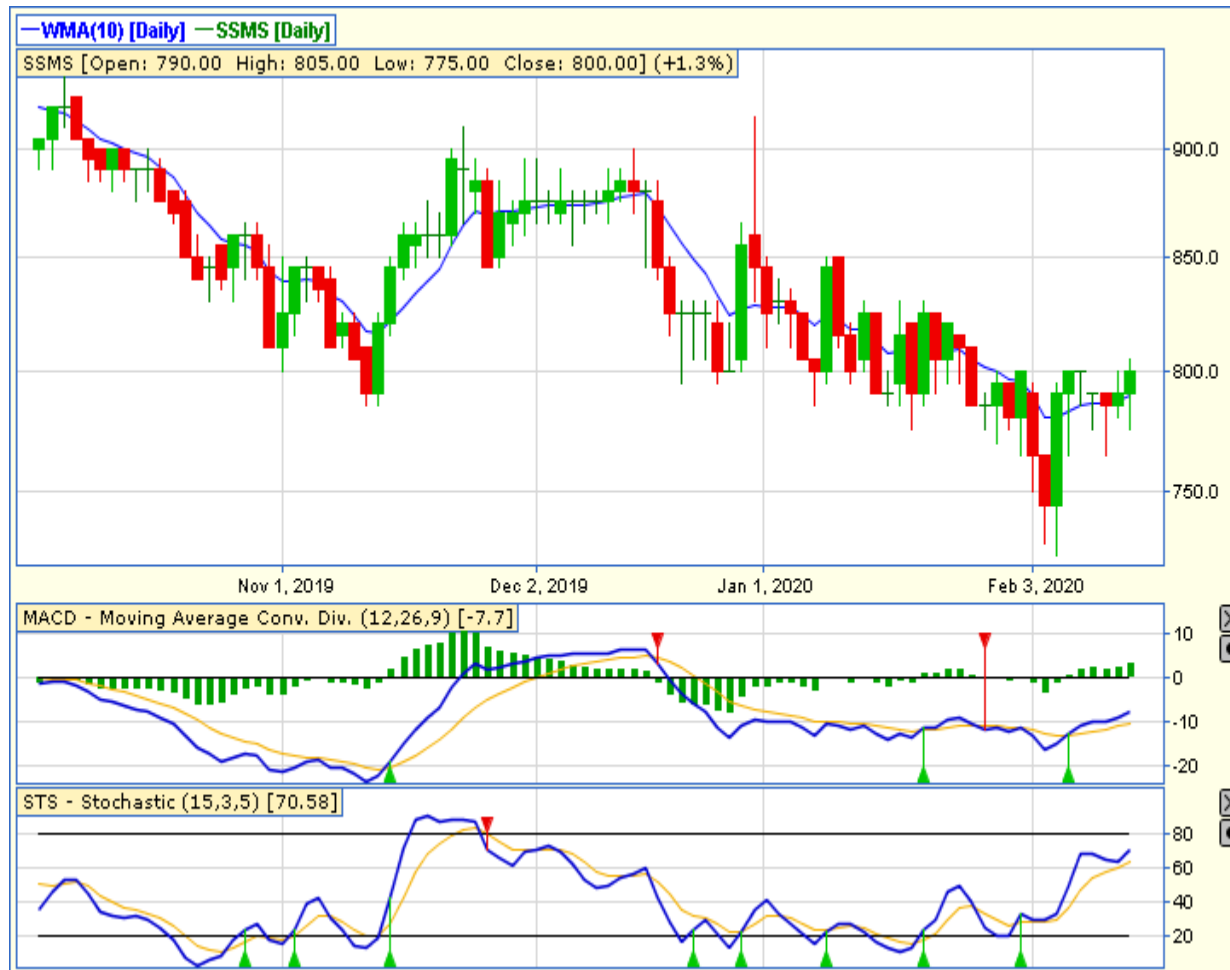
MORNING STAR

STOCHASTIC : OVERSOLD

MACD : HISTOGRAM NEGATIF MENGECIL DAN BERSIAP GOLDEN CROSS



# TECHNICAL RECOMENDATION



**SSMS – PT SAWIT SUMBERMAS SARANA TBK**

CLOSING 13/2/2020 Rp 800 (+1.3%)

**SELL ON STRENGTH  
TAKE PROFIT 830**

BREAK OUT TRIANGLE  
STOCHASTIC : UPTREND  
MACD : HISTOGRAM POSITIF DAN UPTREND

# TECHNICAL RECOMENDATION



**IMAS – PT INDOMOBIL SUKSES INTERNASIONAL  
TBK**

**CLOSING 13/2/2020 RP 865 (+4.8%)**

**BUY  
TARGET PRICE 935  
STOPLOSS < 850**

**HAMMER  
STOCHASTIC : OVERSOLD  
MACD : HISTOGRAM NEGATIF MENGECEIL DAN  
LOWER AREA**

# TECHNICAL RECOMENDATION



**BBNI – PT BANK NEGARA INDONESIA (PERSERO)  
TBK**

**CLOSING 13/2/2020 RP 7400 (+1.7%)**

**SELL ON STRENGTH  
TAKE PROFIT 7525**

**BULLISH ENGULFING  
STOCHASTIC : UPTREND  
MACD : HISTOGRAM POSITIF DAN UPTREND**

# RESEARCH TEAM



**YULIANA**

**RESEARCH ANALYST &  
CORPORATE FINANCE**



**DIMAS WP PRATAMA, CSA**

**TECHNICAL ANALYST**

# EQUITY CAPITAL MARKET TEAM



**JESSIE JAMES**

**HEAD OF EQUITY SALES**



**PRASETYO NUGROHO**

**HEAD OF DEALING ROOM**



**GABRIELLA PRATIWY**

**HEAD OF ONLINE TRADING**